



### MASTER VITRO - VITREOUS ENAMELLED STEEL

## STORAGE models, energy savings!

*Tanks designed to provide an extraordinary energy storage capacity that directly translates into real savings. - Capacities from 1500 to 6000 litres.*

**LARGE CAPACITY STORAGE TANKS:** Designed to provide an extraordinary storage capacity that translates directly into real savings.

**- CAPACITIES from 1500 to 6000 litres -**

Storage tanks ready for installation with plate heat exchanger and/or electric immersion heating elements as the heating source.

**ELECTRIC HEATING:** Ready for installation with Incoloy, low charge density electric immersion elements or with sheathed ceramic heating elements (see ELECTRIC HEATING chapter, page: 106).

**LONG-LASTING PRODUCT: VITREOUS ENAMELLED STEEL** storage tank according to **DIN 4753 T3**.

Food grade impermeable lining with a porcelain look that protects the metal surface of the storage tank in contact with water.

**FOOD GRADE LINING:** Food grade lining according to Royal Decree 891/2006 and EC regulation 1935/2004. Lapesa has further certification of the food grade of the lining at 120°C.

**MAXIMUM WORKING TEMPERATURE:** It withstands maximum continuous working temperatures handled by this type of installation (95°C), without any deterioration or alteration to the lining.

**EASY TO HANDLE AND TRANSPORT:** Our "Master" storage tanks are designed for easy handling and transport to the place of installation.

They have an integrated system for handling and transporting by forklift truck, which facilitates handling operations enormously, as there is no need to palletize the product which, given its weight and size, would make handling difficult.

The tanks are also equipped with lifting eyebolts on the top part so that if they have to be placed in a high area they can be lifted with an overhead hoist.

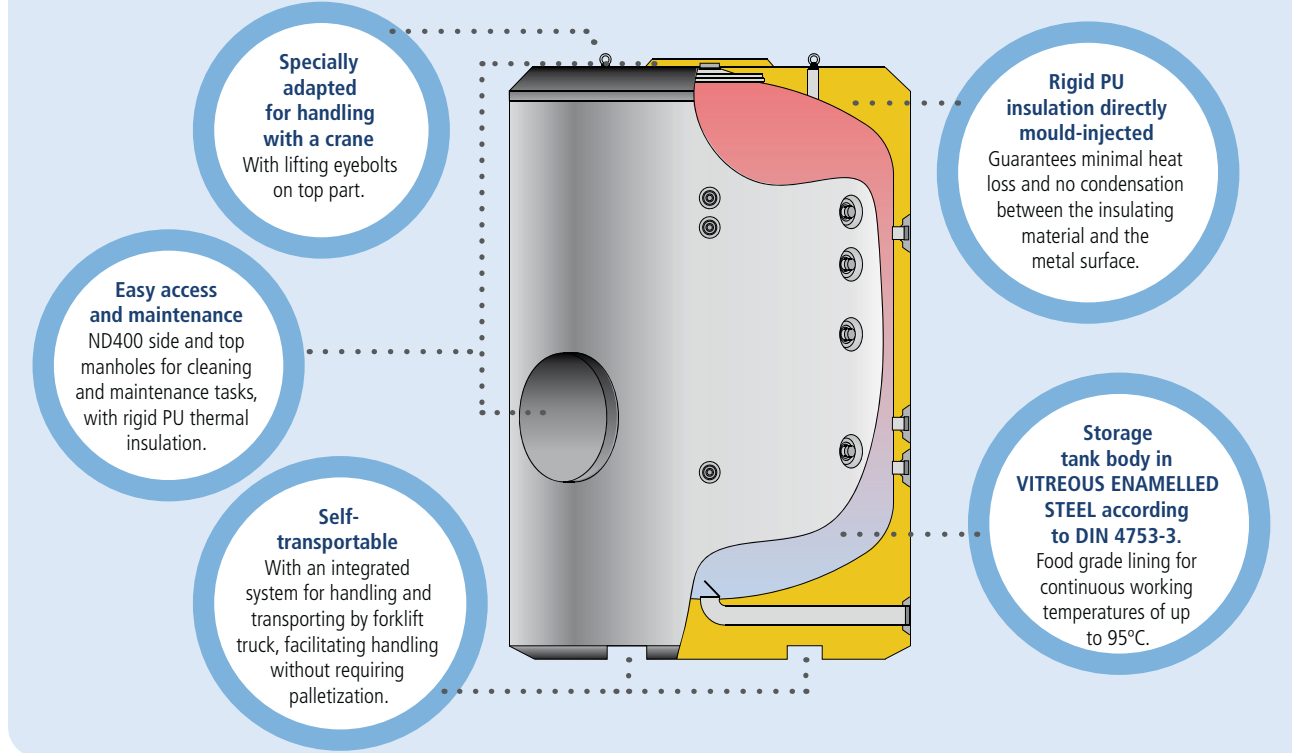


**TRANSPORT SYSTEM:** Openings/ducts under the tank to facilitate handling with pallet trucks (from 1500 litres onward).

**EASY TO MAINTAIN:** With access to interior via two ND400 manholes, one in the side and the other on the top part, for inspection, cleaning and maintenance tasks.

**MAXIMUM STORAGE CAPACITY:** Extra thick, rigid, PU mould-injected insulation that minimizes heat losses of stored DHW (see HEAT INSULATION chapter, page: 108).

### MAIN ADVANTAGES - MASTER VITRO - STORAGE



*lapesa storage tanks have minimal heat losses and for this reason are considered to be one of the products with the greatest storage capacity on the market.*



### FEATURES COMMON TO ALL "MASTER VITRO" STORAGE MODELS:

- **Vitreous enamelled steel** DHW storage tanks according to **DIN 4753/3**
- Capacities: **1500, 2000, 2500, 3000, 3500, 4000, 5000 and 6000 litres**
- Maximum working pressure of DHW storage tank: **8 bar** (10 bar optional)
- Maximum working temperature of DHW storage tank: **95 °C**
- Thermal insulation: **Rigid, mould-injected PU** (CFC/HCFC-free, 0.025 W/m<sup>2</sup>K)
- Tanks for **VERTICAL** installation on floor. (HORIZONTAL position - optional, please consult us)

### MASTER VITRO "RB"

DWH "**STORAGE**" tanks, from **1500** to **6000** litre capacity.

DHW production is by an external heat exchange system (plate heat exchanger).

They can be fitted with immersion electric elements or ceramic electric elements as the main and/or backup heating system. With side and top ND400 manholes to access the interior of the storage tank for inspection, cleaning and maintenance tasks.

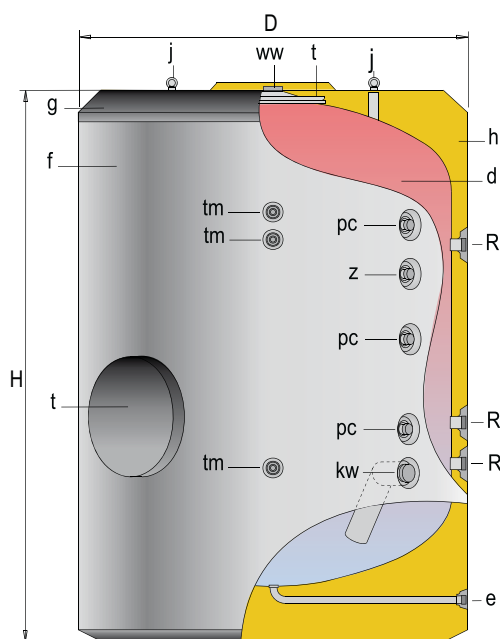
Thermally insulated with rigid, mould-injected, 80 mm-thick, PU polyurethane foam, with insulating piece in same material on the ND400 side manhole.

#### EQUIPMENT:

"**lapesa correx-up**", permanent cathodic protection unit.

Optional: cathodic protection unit with magnesium anodes and anode charge meter.

Optional supply of PVC padded external lining and set of trims or ALUNOX aluminium sheet lining (page: 109).



t - Manhole ND400  
d - DHW tank  
f - Outer lining  
g - Top cover  
h - Thermal insulation  
j - Lifting eyes



GENERAL CHARACTERISTICS		MVV-1500-RB	MVV-2000-RB	MVV-2500-RB	MVV-3000-RB	MVV-3500-RB	MVV-4000-RB	MVV-5000-RB	MVV-6000-RB
DHW capacity	l.	1500	2000	2500	3000	3500	4000	5000	6000
D: external diameter	mm.	1360	1360	1660	1660	1660	1910	1910	1910
H: overall height	mm.	1830	2280	2015	2305	2580	2310	2710	3210
Diagonal	mm.	2281	2655	2611	2841	3068	2998	3316	3735
kw: cold water inlet	" GAS/M	2	2	3	3	3	3	3	3
ww: DHW outlet	" GAS/M	2	2	3	3	3	3	3	3
z: recirculation	" GAS/M	1 1/2	1 1/2	2	2	2	2	2	2
e: drain	" GAS/M	1 1/2	1 1/2	1 1/2	1 1/2	1 1/2	1 1/2	1 1/2	2
R: side connection	" GAS/M	2	2	2	2	2	2	2	2
pc: "lapesa correx up" connection	" GAS/M	1 1/2	1 1/2	1 1/2	1 1/2	1 1/2	1 1/2	1 1/2	1 1/2
tm: probe tube connection for sensors	" GAS/M	3/4	3/4	3/4	3/4	3/4	3/4	3/4	3/4
Empty weight (approx.)	Kg	400	460	635	705	755	915	1030	1134

Note: The 6000 litre model includes support legs



# MASTER VITRO

*tanks designed to  
provide an extraordinary  
energy storage  
capacity that  
directly translates  
into real  
savings.*

