

ATMOSPHERIC TANKS

DOUBLE WALL STEEL-STEEL tanks for buried installation

lapesa

LFD*** Models

Interior and exterior tank in carbon steel (tank with spill containment included)

- Internal tank according to page 3.
- Dimensions and features in accordance with EN12285
- Zinc-plated steel bolts and screws at inspection manholes.
- Vacuum chamber between both walls to detect leaks (See detection devices).
- No civil works required for leak-proof containment. The double wall acts as a containment means.
- Tank built in EN 10025 standard steel (carbon steel or stainless steel to order) with high mechanical and deformation strength that enables it to absorb impacts, vibrations (transit of vehicles, etc.) or moderate earth movements. Adequate resistance to modern additives (alcohols, etc.)

Standard surface finishes

Exterior:

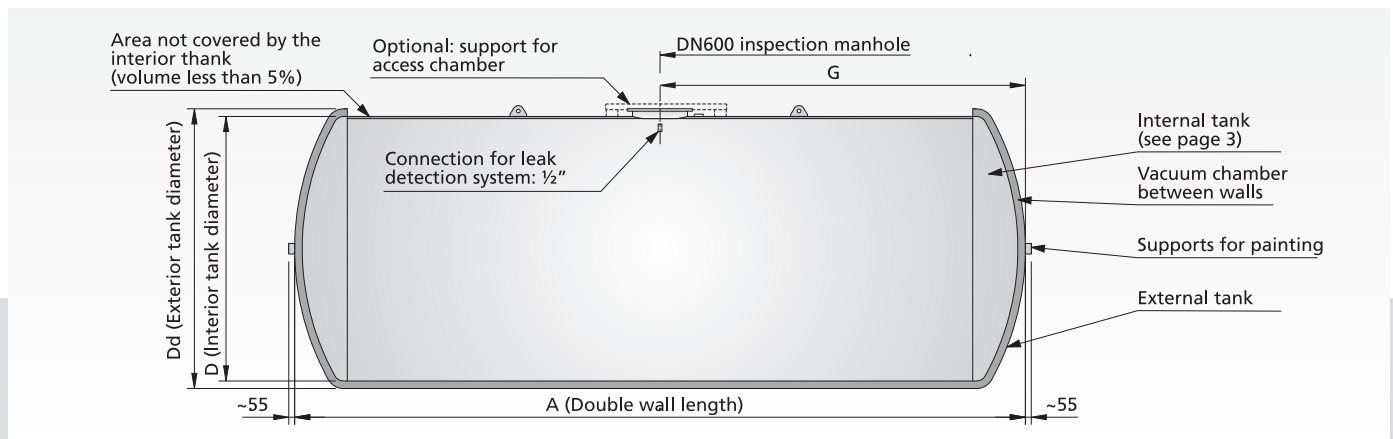
- Blasting to SA 2-1/2 grade.
- Thick polyurethane coating, minimum thickness 600 microns which guarantees electric test voltage >15 KV.
- Coating is highly resistant to corrosion of any origin and to liquid fuel spillages.
- This type of finish gives the tank an unbeatable external appearance.
- External protection can be increased by the use of cathodic protection anodes (see accessories)

Interior:

- Clean.

Other executions (to order):

- Storage tank in stainless steel.
- Interior finishes for specific contents: ad-blue, methanol, ethanol, aviation fuel, sulphuric acid, food quality cold water.



Characteristics table

Rated capacity (litres)	Model Ref.	Approximate empty weight (Kg)	D	Dimensions (mm.) A	G
1500	LFD 1500	350	1200	1510	760
2000	LFD 2000	450	1200	1910	960
3000	LFD 3000	700	1500	2000	1000
5000	LFD 5000	1100	1750	2350	1170
7500	LFD 7500	1500	1750	3410	1170
10000	LFD 10	1900	1750	4560	1170
15000	LFD 15	3000	2200	4310	3380
20000	LFD 20	3700	2500	4610	1950
25000	LFD 25	4550	2500	5590	2790
30000	LFD 30	5000	2500	6590	3290
40000	LFD 40	6250	2500	8580	3930
50000	LFD 50	7800	2500	10750	5370
60000	LFD 60	9050	2500	12730	5910
80000	LFD 80	13300	3000	12110	6520
100000	LFD 100	15850	3000	14860	7430
120000	LFD 120	18150	3000	17610	9270

Standard supply: see Single wall tanks, page 3

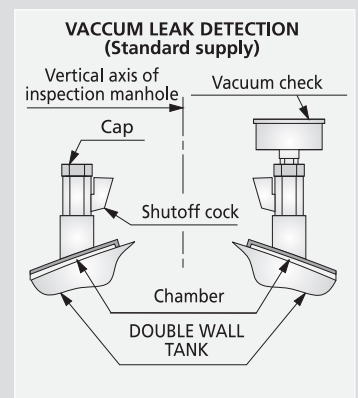
Other options: see page 3

Leak detection:

- Standard supply: as shown in diagram, for vacuum detection of leaks
 - Vacuum carried out at factory.
 - Accessories fitted (compound gauge and shutoff cock)
 - Optional supplies:
 - Chamber filled with glycol mix (for liquid leak detection)
- Vacuum, pressure or liquid leak detection equipment. (See page 10)

Transport:

To protect the coating of the tanks support wedges are used to prevent rubbing on ground and the trucks do not have high sides.



ATMOSPHERIC TANKS

DOUBLE WALL STEEL-POLYETHYLENE tanks for buried installation

lapesa

LFP*** Models

Interior tank in steel and exterior tank in Polyethylene (tank with spill containment included)

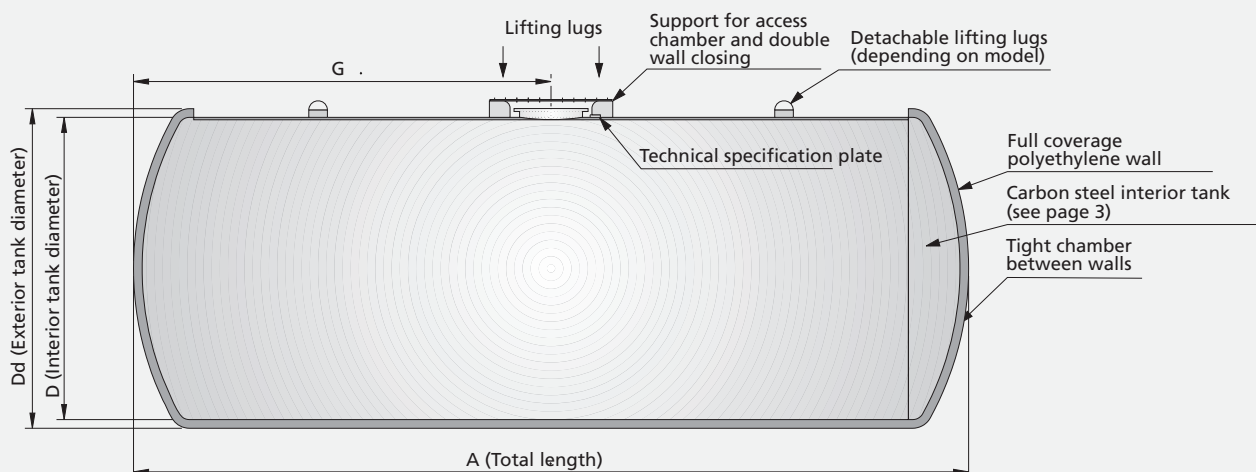
- Exterior tank built with polyethylene (PE) sheet. Interior tank in steel, according to page 3.
- Dimensions and features according to UNE 62350-3 Standard.
- Zinc-plated steel bolts and screws at inspection mouths and at the pit access chamber support.
- Tank is coated with PE sheets.
- Between both walls there is a tight chamber that allows the detection of leaks (see detection devices).
- No civil works required for leak-proof containment. The double wall acts as a containment means.

Steel interior tank:

- Tank built in EN 10025 standard steel (carbon steel or stainless steel to order) with high mechanical and deformation strength that enables it to absorb impacts, vibrations (transit of vehicles, etc.) or moderate earth movements. Adequate resistance to modern additives (alcohols, etc.)

Polyethylene (PE) jacket:

- The polyethylene material of the exterior tank:
 - acts as a safety containment means.
 - is a barrier to corrosion of any origin due to its high chemical stability.
 - completely covers the interior tank (except for the access area) thus preventing corrosion of the steel.
 - is resistant to liquid fuel spillages, to soils, water and many acids and bases.
 - is a dielectric material.
 - is a semi-rigid material allowing deformation without fracturing.
 - is resistant to impacts and vibrations (road traffic)
 - is made from laminated sheets and thus, is totally free of inner pores which may be present in other processes.



Characteristics Table

Rated capacity (litres)	Model Ref.	Approximate empty weight (Kg)	D	Dimensions (mm.)		Thickness (mm.)			
				A	G	Jacket Collar	Jacket End	Inner tank Collar	Inner tank End
15000	LFP 15	1900	2500	3520	1760	3	6	6	6
20000	LFP 20	2350	2500	4620	2310	3	6	6	6
25000	LFP 25	2750	2500	5600	2630	3	6	6	6
30000	LFP 30	3150	2500	6600	3310	3	6	6	6
40000	LFP 40	3950	2500	8590	4290	3	6	6	6
50000	LFP 50	4900	2500	10760	5390	3	6	6	6
60000	LFP 60	5800	2500	12740	5610	3	6	6	6

Standard cover: see Single Wall tanks, page 3

Access chamber support: square 1000x1000 (890x890 clearance). For the installation of a prefabricated access chamber: see page 9

Other options: see page 3

Leak detection:

- Standard supply: as shown in diagram, for vacuum detection of leaks
 - Vacuum carried out at factory.
 - Accessories fitted (compound gauge and shutoff cock)

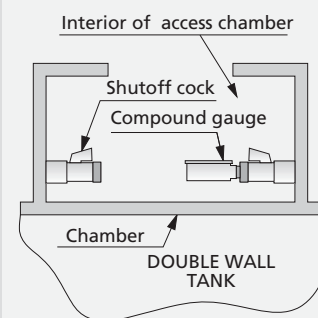
-Optional supplies:

- Vacuum, pressure or liquid leak detection equipment. (See page 10)

Transport:

To protect the coating of the tanks support wedges are used to prevent rubbing on ground and the trucks do not have high sides..

VACUUM LEAK DETECTION (Standard supply)



ATMOSPHERIC TANKS

SIMPLE and DOUBLE WALL STEEL-STEEL tanks for above ground installation

lapesa

LF***P and LFD***P Models

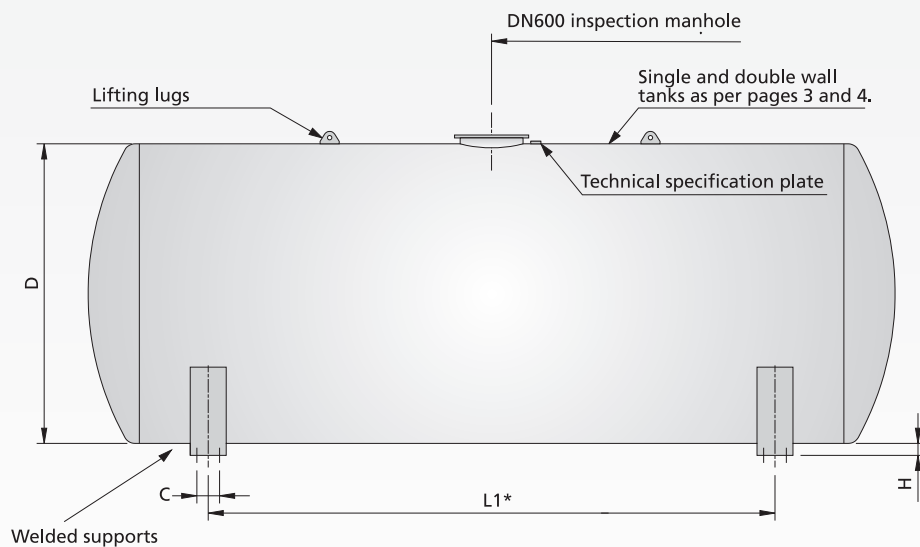
Tanks built in steel plate

The tanks are of the same dimensions and construction characteristics as the models for buried installations and they have supports for their above ground installation.
The supports are welded to the tank body and have the same surface finish.
The figure below shows supports according to EN12285

Standard surface finishes

Exterior:

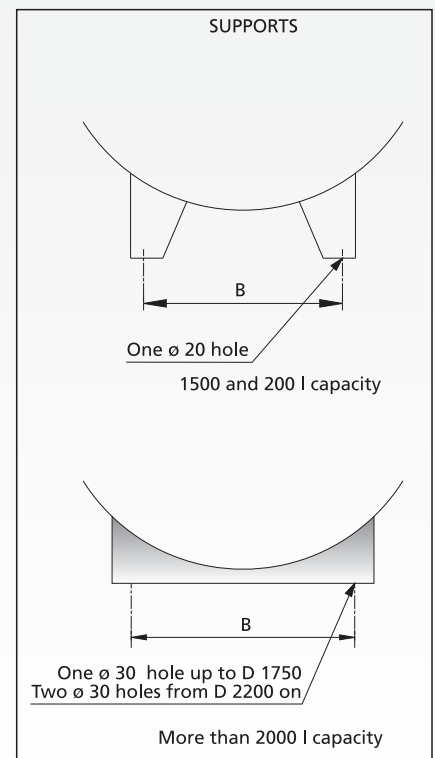
- Blasting to SA 2-1/2 grade.
- Anti-corrosion primer paint.
- White polyurethane finish.



IMPORTANT:

Place the tank anchoring bolts after the tanks has been installed on the baseplate.

*L1 sizes to be confirmed by Lapesa before manufacturing



Single wall

Double wall

Rated capacity (litres)	Nominal diameter D	Model Ref.	Dimensions (mm.) L1	Model Ref.	Dimensions (mm.) L1	H	Dimensions (mm.) B	C
1500	1200	LF 1500 P	1020	LFD 1500 P	1020	100	740	-
2000	1200	LF 2000 P	1420	LFD 2000 P	1420	100	740	-
3000	1500	LF 3000 P	1300	LFD 3000 P	1300	75	1000	-
5000	1750	LF 5000 P	1400	LFD 5000 P	1400	100	1200	-
7500	1750	LF 7500 P	2300	LFD 7500 P	2300	100	1200	-
10000	1750	LF 10 P	3400	LFD 10 P	1700	100	1200	-
15000	2200	LF 15 P	3000	LFD 15 P	3000	100	1800	150
20000	2500	LF 20 P	3200	LFD 20 P	3200	100	2000	150
25000	2500	LF 25 P	3700	LFD 25 P	3700	100	2000	150
30000	2500	LF 30 P	5150	LFD 30 P	2575	100	2000	150
40000	2500	LF 40 P	7100	LFD 40 P	3550	100	2000	150
50000	2500	LF 50 P	9300	LFD 50 P	3100	100	2000	150
60000	2500	LF 60 P	5450	LFD 60 P	3400	100	2000	150
80000	3000	LF 80 P	10300	LFD 80 P	4500	100	2500	200
100000	3000	LF 100 P	6425	LFD 100 P	4200	100	2500	200
120000	3000	LF 120 P	7800	LFD 120 P	3900	100	2500	200

Standard cover: see single wall tanks, page 3

Other options: see page 3