

<b>GENERAL</b>	2
<b>SINGLE WALL TANKS FOR BURIED INSTALLATION</b>	
• LFF*** Models	3
<b>STEEL-STEEL DOUBLE WALL TANKS FOR BURIED INSTALLATION</b>	
• LFD*** Models	4
<b>STEEL-POLYETHYLENE DOUBLE WALL TANKS FOR BURIED INSTALLATION</b>	
• LFP*** Models	5
<b>STEEL-STEEL SINGLE AND DOUBLE WALL TANKS FOR ABOVE GROUND INSTALLATION</b>	
• LF***P y LFD***P Models	6
<b>ABOVE GROUND TANKS FOR SMALL CONSUMPTION AND AUTONOMOUS UNITS</b>	
• LFT*** y LFDUA** Models	7
<b>VERTICAL TANKS</b>	
• LFV*** Models	8
<b>ACCESSORIES FOR TANKS</b>	9
<b>LEVEL CONTROL AND LEAK DETECTION DEVICES</b>	10
<b>INSTALLATION INSTRUCTIONS. Anchoring of buried tanks</b>	11
<b>PRODUCTION PROGRAMME</b>	12

# ATMOSPHERIC TANKS

## DOUBLE WALL STEEL-STEEL tanks for buried installation

**lapesa**

### LFD\*\*\* Models

#### Interior and exterior tank in carbon steel (tank with spill containment included)

- Internal tank according to page 3.
- Dimensions and features in accordance with EN12285
- Zinc-plated steel bolts and screws at inspection manholes.
- Vacuum chamber between both walls to detect leaks (See detection devices).
- No civil works required for leak-proof containment. The double wall acts as a containment means.
- Tank built in EN 10025 standard steel (carbon steel or stainless steel to order) with high mechanical and deformation strength that enables it to absorb impacts, vibrations (transit of vehicles, etc.) or moderate earth movements. Adequate resistance to modern additives (alcohols, etc.)

#### Standard surface finishes

##### Exterior:

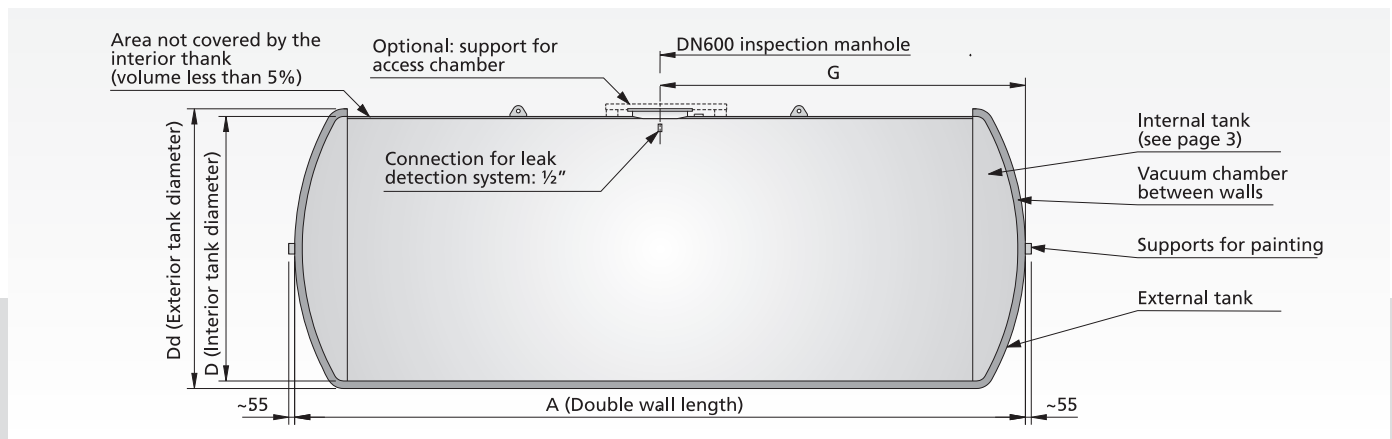
- Blasting to SA 2-1/2 grade.
- Thick polyurethane coating, minimum thickness 600 microns which guarantees electric test voltage >15 KV.
- Coating is highly resistant to corrosion of any origin and to liquid fuel spillages.
- This type of finish gives the tank an unbeatable external appearance.
- External protection can be increased by the use of cathodic protection anodes (see accessories)

##### Interior:

- Clean.

##### Other executions (to order):

- Storage tank in stainless steel.
- Interior finishes for specific contents: ad-blue, methanol, ethanol, aviation fuel, sulphuric acid, food quality cold water.



#### Characteristics table

Rated capacity (litres)	Model Ref.	Approximate empty weight (Kg)	D	Dimensions (mm.) A	G
1500	LFD 1500	350	1200	1510	760
2000	LFD 2000	450	1200	1910	960
3000	LFD 3000	700	1500	2000	1000
5000	LFD 5000	1100	1750	2350	1170
7500	LFD 7500	1500	1750	3410	1170
10000	LFD 10	1900	1750	4560	1170
15000	LFD 15	3000	2200	4310	3380
20000	LFD 20	3700	2500	4610	1950
25000	LFD 25	4550	2500	5590	2790
30000	LFD 30	5000	2500	6590	3290
40000	LFD 40	6250	2500	8580	3930
50000	LFD 50	7800	2500	10750	5370
60000	LFD 60	9050	2500	12730	5910
80000	LFD 80	13300	3000	12110	6520
100000	LFD 100	15850	3000	14860	7430
120000	LFD 120	18150	3000	17610	9270

**Standard supply:** see Single wall tanks, page 3

**Other options:** see page 3

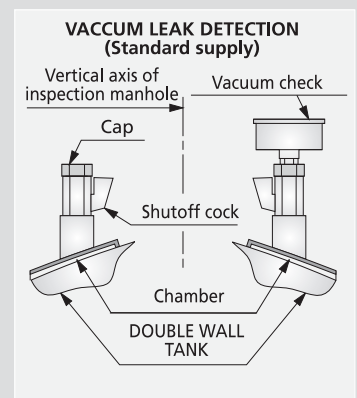
##### Leak detection:

- Standard supply: as shown in diagram, for vacuum detection of leaks
  - Vacuum carried out at factory.
  - Accessories fitted (compound gauge and shutoff cock)
- Optional supplies:
  - Chamber filled with glycol mix (for liquid leak detection)

Vacuum, pressure or liquid leak detection equipment. (See page 10)

##### Transport:

To protect the coating of the tanks support wedges are used to prevent rubbing on ground and the trucks do not have high sides.



# ATMOSPHERIC TANKS

**SIMPLE and DOUBLE WALL STEEL-STEEL tanks for above ground installation**

**lapesa**

## LF\*\*\*P and LFD\*\*\*P Models

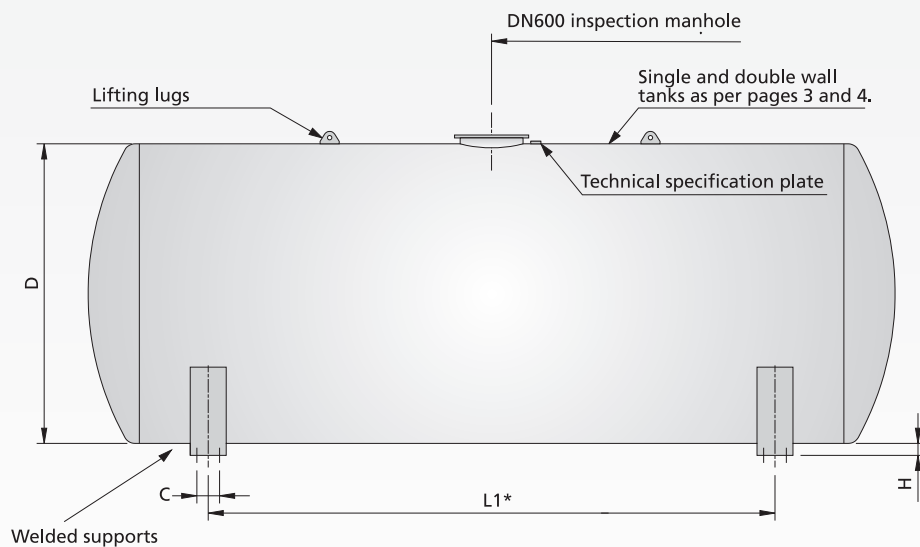
### Tanks built in steel plate

The tanks are of the same dimensions and construction characteristics as the models for buried installations and they have supports for their above ground installation.  
The supports are welded to the tank body and have the same surface finish.  
The figure below shows supports according to EN12285

### Standard surface finishes

Exterior:

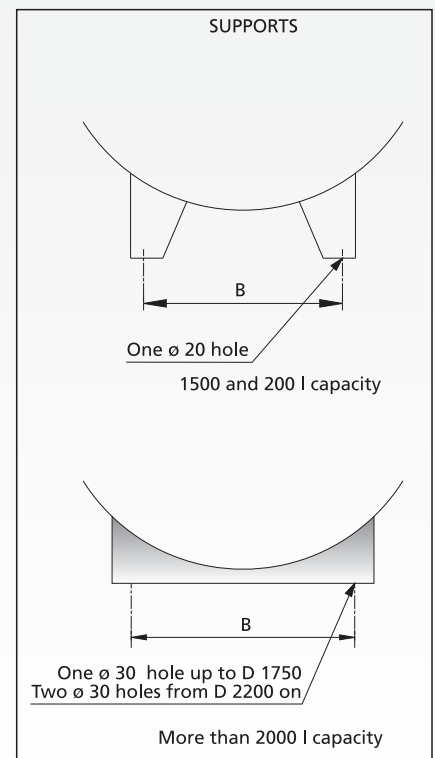
- Blasting to SA 2-1/2 grade.
- Anti-corrosion primer paint.
- White polyurethane finish.



#### IMPORTANT:

Place the tank anchoring bolts after the tanks has been installed on the baseplate.

\*L1 sizes to be confirmed by Lapesa before manufacturing



### Single wall

Rated capacity (litres)	Nominal diameter D	Model Ref.	Dimensions (mm.) L1
1500	1200	LF 1500 P	1020
2000	1200	LF 2000 P	1420
3000	1500	LF 3000 P	1300
5000	1750	LF 5000 P	1400
7500	1750	LF 7500 P	2300
10000	1750	LF 10 P	3400
15000	2200	LF 15 P	3000
20000	2500	LF 20 P	3200
25000	2500	LF 25 P	3700
30000	2500	LF 30 P	5150
40000	2500	LF 40 P	7100
50000	2500	LF 50 P	9300
60000	2500	LF 60 P	5450
80000	3000	LF 80 P	10300
100000	3000	LF 100 P	6425
120000	3000	LF 120 P	7800

### Double wall

Model Ref.	Dimensions (mm.) L1	H	Dimensions (mm.) B	C
LFD 1500 P	1020	100	740	-
LFD 2000 P	1420	100	740	-
LFD 3000 P	1300	75	1000	-
LFD 5000 P	1400	100	1200	-
LFD 7500 P	2300	100	1200	-
LFD 10 P	1700	100	1200	-
LFD 15 P	3000	100	1800	150
LFD 20 P	3200	100	2000	150
LFD 25 P	3700	100	2000	150
LFD 30 P	2575	100	2000	150
LFD 40 P	3550	100	2000	150
LFD 50 P	3100	100	2000	150
LFD 60 P	3400	100	2000	150
LFD 80 P	4500	100	2500	200
LFD 100 P	4200	100	2500	200
LFD 120 P	3900	100	2500	200

Standard cover: see single wall tanks, page 3

Other options: see page 3