

**SEMI-TRAILER
TANKER**

for transport
and distribution
of **LPG**

Tanker type features:

- Products to be transported, liquid gases class 2 (ADR): propane, butane, isobutane, mixtures, etc.
- Manufactured under applicable European Directives: 2010/35/UE (π marking), 2008/68/CE.
- Applicable regulations: ADR, EN12493, IMO8 (optional).
- Maximum working pressure: 19,2 bar.
- Design and test pressure: 25 bar.
- Inspections and controls according to ADR.
- Anticorrosive primer finish (high strength cataphoresis for the frame) and white polyurethane finish (blue chassis).



OVERALL DIMENSIONS FOR A 44 TON SET

- Nominal capacity: 52 m³
- Approximate tare: 14 Ton
- LPG load: 21,8 Ton

INCLUDED ELEMENTS IN A BASIC TANKER

- Internal baffles inside for transport with partial filling.
- Aluminum sunshade in the upper area of the cylinder.
- DN500 inspection manhole.
- Loading cabinet in the central area, with access from both sides.
- Distribution cabinet in the central area, right side.
- Rolling set with the following characteristics:
 - Complete frame, for better distribution of loads, and long life.
 - SAF axes or similar.
 - Aluminum wheels.
 - ADR electrical installation.
 - Parking brake by 2-axis pneumatic actuators.
 - EBS 2S / 2M. Disc 430 x 45.
 - Shaft elevator.
 - Mud wing set, wheel wrenches, aluminum bumpers, tooldrawer, two fire extinguishers with box ...

LPG EQUIPMENT

- Pneumatic operated bottom valves, REGO or similar.
- Manual stopvalves, ball type, with stainless steel sphere.
- Blackmer 3" type pump. With hydraulic motor. With Blackmer 1-1 / 2" bypass.
- Liquid Control type volumetric counter with temperature compensator. Electronic head. Printer in separate cabinet.
- Hose 1-1/4" (28 meters), in winder with pneumatic/hydraulic reel.
- Connections to gas or liquid phase, finished in flange.
- Optionally, the terminal will be placed according to the customer needs.
- All pipe sections are protected by relief valves, either manual or automatic.
- Other tank valves:
 - REGO type rotating level.
 - Internal safety valves, REGO type (IMO case).
 - High point indicator and pressure gauge.
 - Temperature indicator.

lapesa
Solutions



We adapt our products to the needs of our clients (truck, capacity, equipment, sunshade, etc.). An example of a tanker is shown in this catalog. Check with us your requirements.

EMERGENCY/SAFETY SYSTEMS

- The tanker includes **6 emergency pushbuttons** in various tanker locations. When manually activated, they close the tanker stopvalves and the pump switches to stop mode.
- **Detector for closed cabinet:** When valves cabinet is closed (no intention for LPG transfer), this detector closes the tanker stop valves and the pump switches to stop mode.
- **Parking brake:** Tanker stop valves can only be opened when the parking brake is activated.
- **Anti-start system:** In case the truck tries to be started with the valves cabinet open, this safety system acts on the truck brakes, leaving them constantly activated. To avoid a possible wrong contact during truck driving, that could cause a sudden break on road, this system only acts when speed is below 5 km/h (when starting the truck).

HYDRAULIC INSTALLATION:

- For the correct operation of the hydraulic circuit that moves the LPG pump, the tractor unit must have a power intake, hydraulic pump, oil tank, cooler...

FINAL DOCUMENTATION

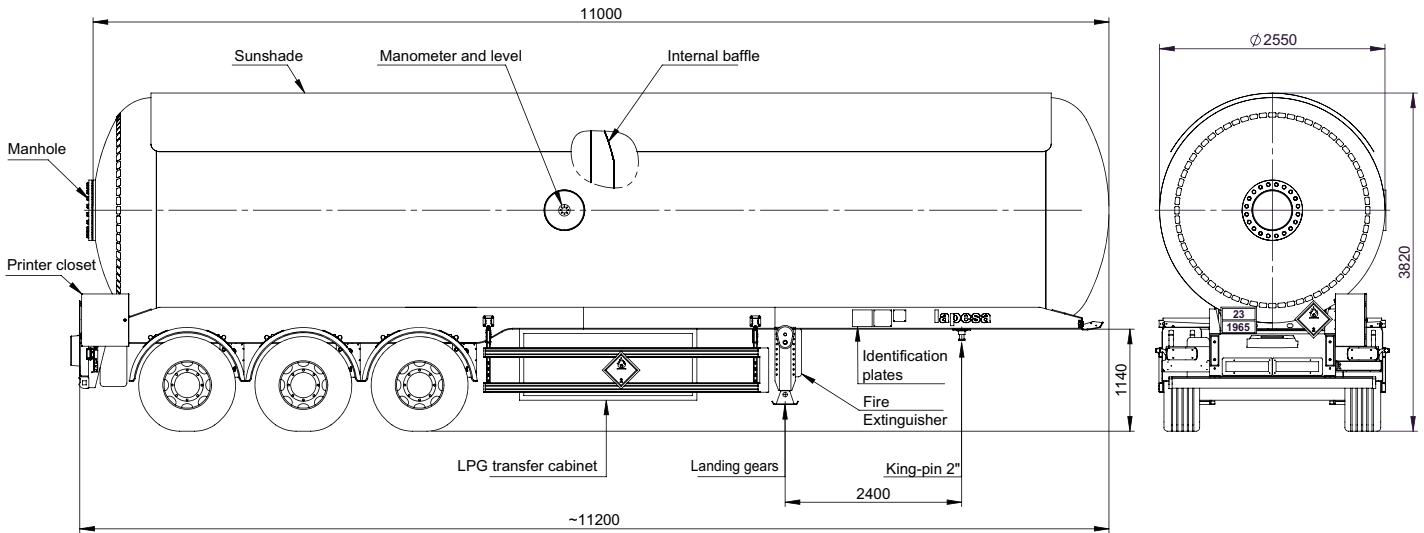
- Manufacturing dossier.
- ADR documentation.
- Instructions manual.
- Technical drawing
- Complete documentation of vehicle homologation.



SOME EXAMPLES OF OPTIONAL ELEMENTS:

- Loading connections in the rear area.
- Auto-filling equipment, which allows the pump to be used to fill the tank
- Tank inertization.
- Thermal treatment.
- IMO8 (allows to transport the tanker by ship, for short distances).
- Finished with customer image, logos...
- Different brands for transfer equipment.
- Stainless steel pipes.
- Fire Safe Valves.
- Specific connections to gas phase and liquid phase.
- Extras in rolling unit:
 - Polished wheels.
 - Third autodirectional axis.
 - Integral LED lights.
 - Load distributor ... and many more.





PIPING AND INSTRUMENTATION (P&ID) LTT52

