

LNG TANKERS

TANKER FOR THE TRANSPORT AND SUPPLY OF LNG

LTC58

Cylindrical cryogenic tanker for the transport and supply of LNG, 58 m³ capacity, 44 TN MAM chassis.

CHARACTERISTICS STANDARD TANKER

- Products to be transported: cryogenic liquefied gases class 2:
LNG (UN1972), methane (UN1972), ethane (UN1961), ethylene (UN1038), etc.
- Manufactured according to applicable European Directives:
2010/35/UE (Pi marking), 2014/103/UE.
- Application norms: ADR, EN13530, IM08 (optional).
- Maximum working pressure: 3 bar.
- Design temperature: -196 °C + 50 °C.
- Inner tank material: Austenitic stainless steel.
- Thermal insulation multilayer with high vacuum.
- Finishing with anticorrosive primer (high grade cataphoresis for chassis)
and white polyurethane (blue color for chassis).

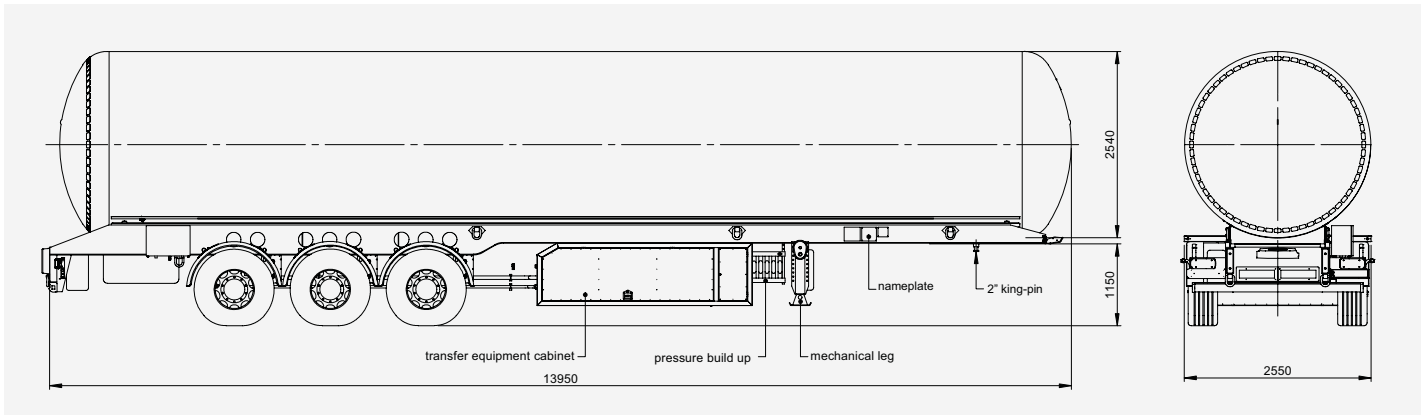


We adapt to the needs of our clients.

Shown is an example of our standard tanker. Other options available upon request.

LNG TANKERS

TANKER FOR THE TRANSPORT AND SUPPLY OF LNG



ELEMENTS INCLUDED IN STANDARD TANKER

- Internal baffles for partial loads.
- Cabinet in central area, accessible from either left or right side.
- Rolling unit characteristics:
 - Three axles (two wheels per axle) with 20" bushing.
 - King-pin 2".
 - Pneumatic suspension.
 - Full frame, for optimal and long-lasting weight distribution.
 - Axles SAF or similar.
 - Aluminum rims.
 - ADR electrical installation.
 - Parking brake with 2 axis pneumatic actuators.
 - EBS brakes S2/SM. Disc brake 430 x 45.
 - Axis-type elevator.
 - Telescopic mechanical feet.
 - Rubber mudguards, keys for wheels, aluminum rear anti-embedment device, toolbox, two fire-extinguishers with box, etc.
 - Others: please consult.

GENERAL DIMENSIONS FOR A 44 TON TANKER

- Nominal capacity: 58 m³.
- Approximate tanker empty weight: 12,5 tons.
- Approximate loading capacity (assuming 7,5 ton tractor head):
 - 24 tons (total 44 ton).
 - 23 ton (with LNG 3 bar at 95%).
 - 21 ton (with LNG 0 bar at 89%).

LNG EQUIPMENT

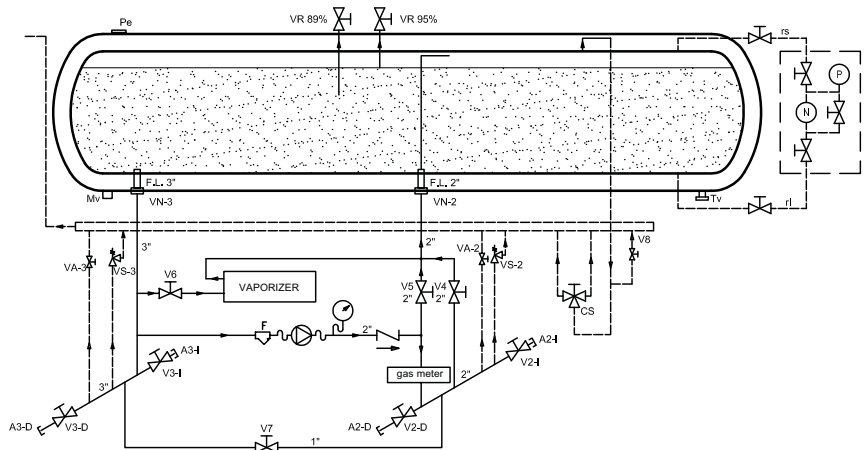
- Discharge pump.
- Pressure elevator.
- Volumetric counter.
- Cabinet with door.
- Mechanical level indicator by differential pressure.
- Internal bottom valves with non-return feature included.
- Cryogenic stopvalves.
- Pressure relief valves in pipes, manual and automatic, connected to vent pipe.
- P&ID adapted to client needs.

lapesa
Solutions



SCHEMATIC DIAGRAM LTC58 LNG TANKER

CS	3-way valve (safety)
VS	Safety valve
VA	Pressure relief valve
ri	Bottom level valve
rs	Top level valve
N	Level
Mv	Vacuum gauge device
Pe	Casing safety device
Vg	Vacuum connection
FG	Gas phase
FL	Liquid phase
VR	Maximum filling valve
V*	Manual valves
VN*	Pneumatic bottom valve



SAFETY/EMERGENCY SYSTEMS

- The tankers include **6 emergency pushbuttons**, distributed in various places. When manually actuated, they close the bottom valves of the tanker and the pump enters stop mode.
- **Closed cabinet detector.** When the transfer cabinet is closed, the bottom valves stay closed and the pump enters stop mode.
- **Parking brake.** The bottom valves can only be opened when this brake is activated.
- **Anti-start system.** If the driver starts driving with the cabinet open, the system acts on the brakes, braking the tanker. The system does not act when speed is higher than 5 km/h.
- **Safety valves** against LNG overpressure, with manifold.

HYDRAULIC INSTALLATION

- For the correct operation of the hydraulic circuit that feeds the LNG pump, the tractor head must include a power supply, hydraulic pump, oil tank, refrigeration system, etc...

FINAL DOCUMENTATION

- Manufacturing dossier
- ADR documentation
- Instructions manual
- Technical drawing
- Full documentation about vehicle homologation

EXAMPLES OF OPTIONAL ELEMENTS

- Inertizing
- IMO 8 (allows the transport of the tank on short distances)
- Finishing with client logo
- Different brands for the equipment
- Extras for rolling unit:
 - Polished rims
 - Third axle auto-directional
 - Integral LED lights
 - Weight distributor

